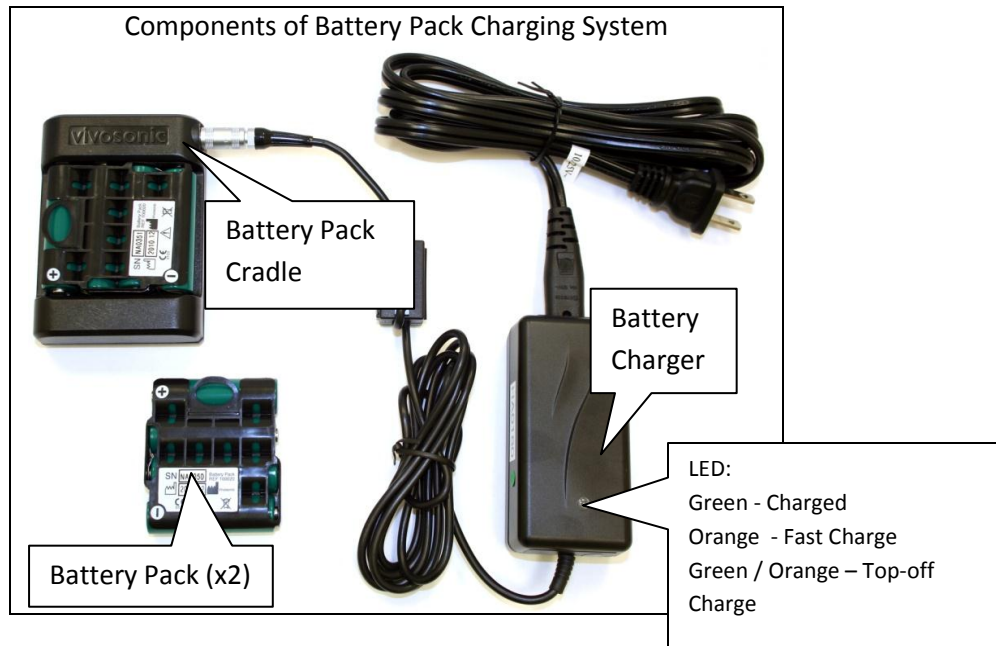


Instructions for Using the Battery Pack Charging System – FOR USE WITH BOTH THE INTEGRITY V500 AND AURIX SYSTEMS.

This package contains the following items:



Charging the Battery Pack using the Battery Pack Cradle.

Prior to using the Battery Pack(s), please charge the battery using the Battery Charger and the Battery Pack Cradle as follows:

- Attach the silver connector on the Battery Charger to the silver port on the Battery Pack Cradle.
- Place the Battery Pack in the Battery Pack Cradle so that the + and - icons on the Battery Pack and the Battery Pack Cradle point in the same direction.
- Plug the power lead on the Battery Charger to a wall socket.
***** WHEN CHANGING BATTERY PACK TO RECHARGE, UNPLUG THE BATTERY CHARGER FROM THE WALL, PLACE THE NEW BATTERY PACK INTO THE CRADLE AND THEN PLUG THE CHARGER BACK INTO THE WALL. THE LED LIGHT WILL SHOW ORANGE or GREEN/ORANGE WHEN CHARGING.**

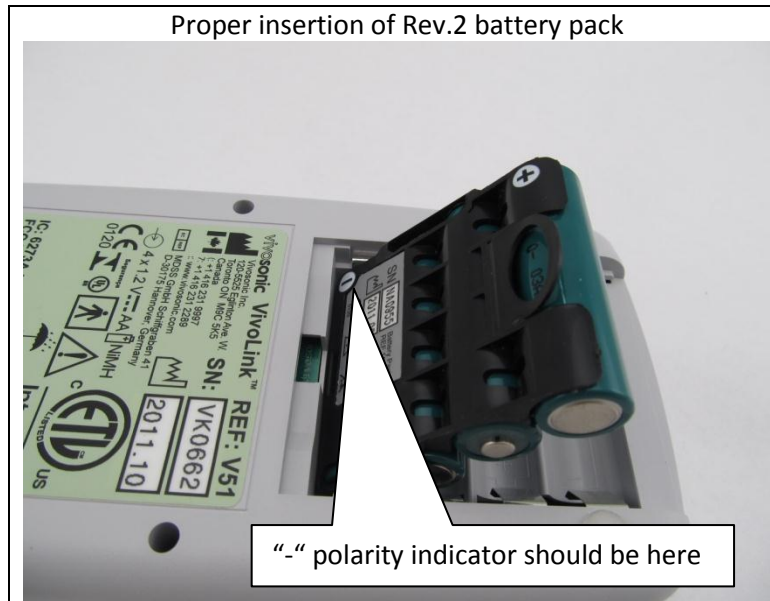
Charging the Battery Pack within Aurix Link

The Aurix Link allows you to charge the Battery Pack that is installed in the Link directly from the Battery Charger.

- Attach the connector from the Battery Charger to the corresponding connector on the base of the Aurix Link. The silver connector from the Battery Charger connects to the silver port on the Link.
- The LED light on the charger will turn Orange or Green/Orange when charging and Green when complete.
***** THE AURIX LINK WILL NOT TURN ON WHEN THE BATTERY CHARGER IS PLUGGED INTO IT. TO USE THE LINK, UNPLUG THE BATTERY CHARGER FROM THE LINK.**

Installing the Battery Pack into the VivoLink and Link.

1. Open the VivoLink or Link battery compartment.
2. Remove and set aside any previously used batteries.
3. Place the Battery Pack in the battery compartment as shown below. Please pay close attention to orientation of the Battery Pack.



Warnings

- Use only Vivosonic Battery Packs. Use of other batteries may damage the charging system and/or the batteries, and endanger the user.
- Use only the Battery Charger supplied with your Battery Pack Charging System.
- The Battery Packs are meant to be replaced after about five to seven months of regular use. Please ensure that local by-laws are obeyed when disposing these Battery Packs.
- Ensure that the Battery Packs are inserted in the correct orientation when placed in the Battery Pack Cradle and when placed in the VivoLink or Link.
- The Charging System should not come in contact with any liquids, or be exposed to extreme humidity. Discontinue use of the Charging System if any of these conditions occur and contact Vivosonic's technical support team for further assistance, 1-877-255-7685 x 254.

**IF YOU HAVE ANY QUESTIONS OR ISSUE DURING THIS PROCEDURE,
PLEASE CALL CUSTOMER SUPPORT AT 1.877.255.7685.**