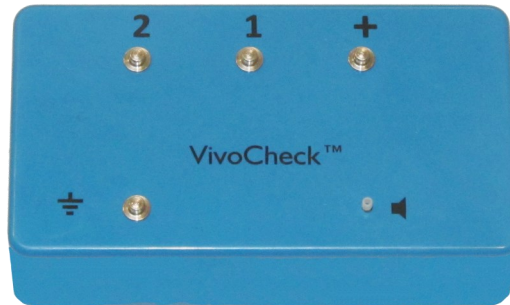


# VivoCheck™

## System Verification Tool

### Optimize Your Integrity™ Experience



The all-new VivoCheck™ is a **portable, quick and easy to use** tool that helps you ensure your Integrity™ V500 System is performing optimally in *your* particular clinical environment.

#### Clinical Benefits

**Check your system.** By connecting your Integrity System to the VivoCheck™ you can confirm, within seconds, that your Amplitrode® and earphones are in good working order, and that noise filtering is progressing as expected. See the acoustic stimulus represented by the waveform on the Integrity™ screen.

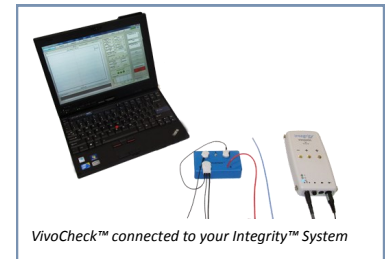
**Identify the best location for testing.** Use the VivoCheck™ in different areas within your clinic to determine the optimal location for patient testing, avoiding potential hot spots of electromagnetic interference that can contaminate your measurements. Place your VivoLink™ in a location with minimal noise to facilitate faster measurement time and cleaner waveforms.

**Establish baseline data.** Once you have identified an optimal location for testing, it is valuable to collect baseline data for future reference. This data can help you determine if there has been a change in the system or noise in your environment that may affect your measurements.

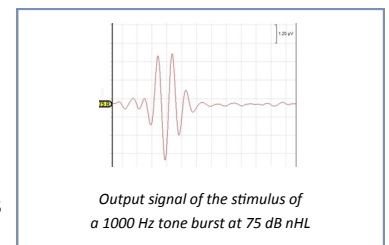
#### The perfect companion to your Integrity™ System!

Contact us today to reserve your VivoCheck™.

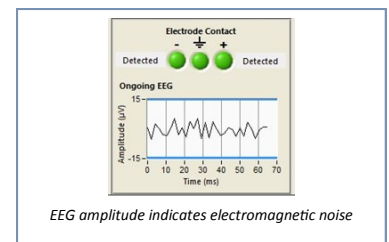
Tel: 1.416.231.9997 E-mail: [sales@vivosonic.com](mailto:sales@vivosonic.com)



VivoCheck™ connected to your Integrity™ System



Output signal of the stimulus of a 1000 Hz tone burst at 75 dB nHL



EEG amplitude indicates electromagnetic noise

**Dimensions:** 11 cm x 6 cm x 2.7 cm

**Weight:** 98g

**Features:** - 4 snaps to attach Amplitrode®  
- plastic tip for ER-3A tubing

**Impedance:** 6 kΩ mismatch under ideal conditions

**Power supply:** No external power supply or batteries required.



120-5525 Eglinton Ave. W.  
Toronto, ON M9C 5K5

The Benefits of Sound Technology

Document ID: D-14169-en, Ver2